

CLASSE 3\_SSPG

DISCIPLINA SCIENZE\_CLIL

TIPOLOGIA

- a) WARMING UP ( GAME)
- b) VIDEO GET INFORMATION / TASKS
- c) self test
- d) indicazioni e materiale per autocorrezione

ARGOMENTO **ENDOCRINE SYSTEM**

a) WARMING UP IDENTIFY GLANDS (GAME)

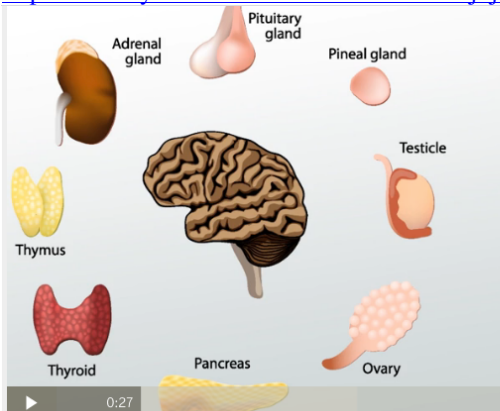
<https://www.purposegames.com/game/endocrine-system-glands-quiz>

b) leggere e comprendere queste domande che sono di guida alla comprensione del video che guarderemo insieme

- 1) WHAT IS THE ENDOCRINE SYSTEM? WHAT DOES IT PRODUCE?
- 2) WHAT ARE HORMONS ?
- 3) WHERE DO GLANDS RELEASE HORMONS FLOW (lasciano che gli ormoni fluiscono)?
- 3) WHAT ARE GLANDS?
- 4) NAME A LIST OF MAIN GLANDS
- 5) WHAT ARE THE TWO MAIN STRUCTURES IN THE BRAIN THAT CONTROL ALL THE OTHER GLANDS? WHAT IS THEIR FUNCTION?
- 6) REMEMBER THE NAME OF TWO HORMONS AND THEIR FUNCTION
- 7) HOW DO YOUR HORMONES WORK?

<https://www.youtube.com/watch?v=e4cuIfgMsNs>

<https://www.youtube.com/watch?v=HJI11Fj4jYs>



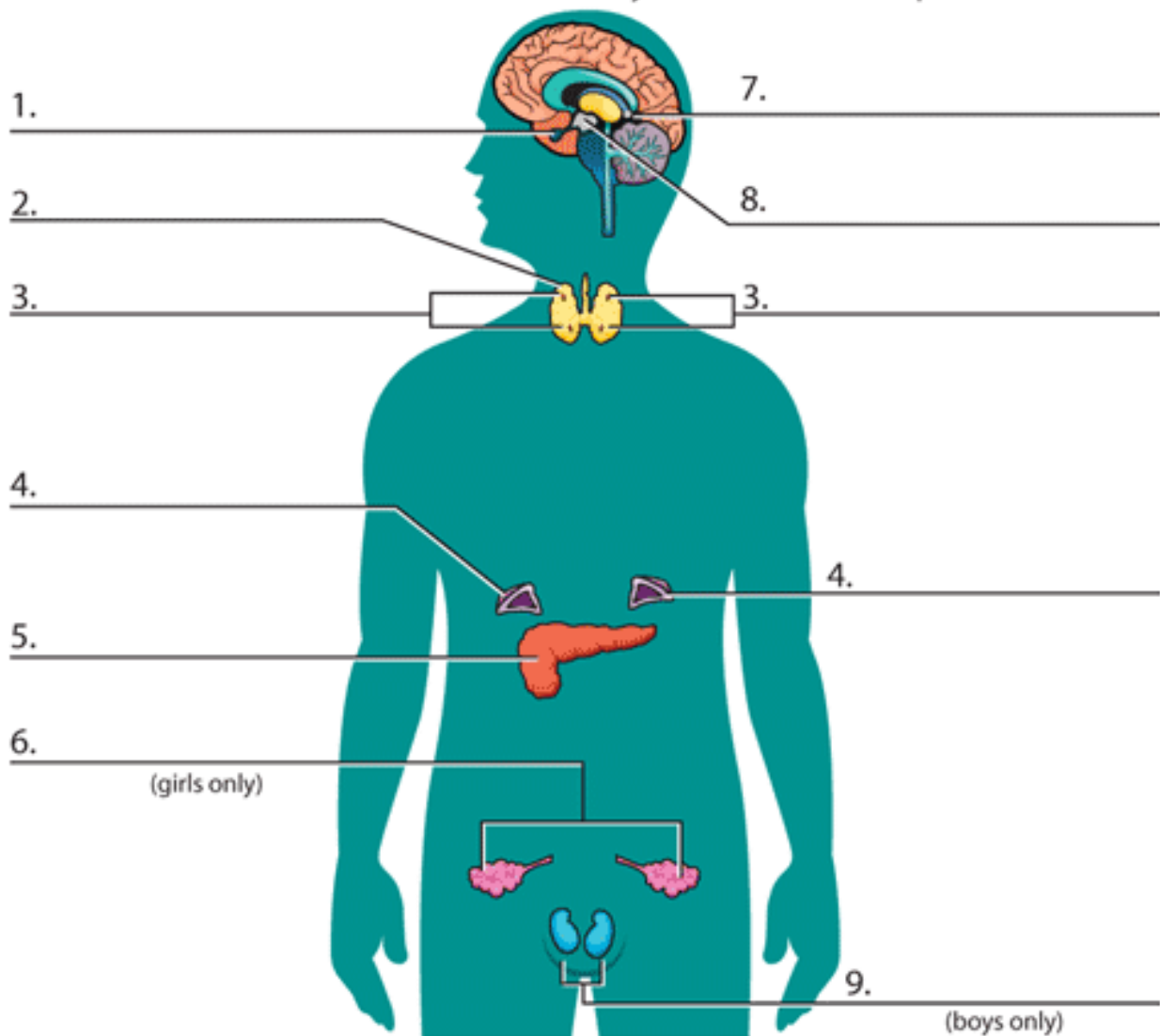
c) VERIFICA SE HAI IMPARATO

Completa lo schema ( se hai dubbi trovi le risposte nel GAME

# HOW THE BODY WORKS

## The Endocrine System

Directions: Print out the body and label all the parts.



### WORD BANK

pituitary  
thyroid  
parathyroids

pineal gland  
hypothalamus  
adrenal

pancreas  
ovaries  
testes

### 1) FILL IN THE GAP

GLUCOSE THYROID BLOODSTREAM BRAIN CONTROL  
HORMONES

The endocrine system is made up glands that secrete hormones in the \_\_\_\_\_

You learned that the pituitary gland, is the "master gland" of the endocrine system. It makes and releases hormones that \_\_\_\_\_ other glands and body functions. Pituitary gland is in your \_\_\_\_\_ .

Your \_\_\_\_\_ gland is in your neck and it's shaped like a butterfly. It makes \_\_\_\_\_ that are important for growth and it helps you stay alert and full of energy.

The islets of Langerhans are important in the metabolism of \_\_\_\_\_  
They make hormones including insuline.

### 2) FILL IN THE GAP

\_\_\_\_\_/3

TESTES PROGESTERONE ESTROGEN

The female hormones are \_\_\_\_\_

Instead, testosterone is the main androgen secreted by the \_\_\_\_\_

### 3) FIND THE CORRECT ANSWER

1) Glands are small organs located throughout your body that secrete substances called:

- A) Plasma      C) Enzymes
- B) Hormones    D) Bile

2) Hormones help your body by:

- A) Telling your cells what to do      C) Sending nerve messages  
B) Helping you breathe                  D) Oxidizing your blood

3) This gland is sometimes called the master gland, though it is only about the size of a pea:

- A) Pituitary              C) Pineal  
B) Adrenal              D) Hypothalamus

QUI TROVI UN TESTO DI AIUTO con evidenziato le parti principali per rispondere / verificare le risposte in autocorrezione

1) WHAT IS THE ENDOCRINE SYSTEM?

The endocrine system is made up of **glands** that produce and secrete **hormones**. The word endocrine derives from the Greek words "endo," meaning within, and "crinis," meaning to secrete,

**Hormones are** chemical substances produced in the body that regulate the activity of cells or organs. **Hormones are released in the bloodstream.**

We have a variety of endocrine glands in different sizes and shapes located in different parts of the body.

The endocrine system is made up of the pituitary gland, thyroid gland, parathyroid glands, adrenal. Isle of Langerhans in pancreas, ovaries (in female) and testis (in males).

For example we learned that the **pituitary gland**, which is about the size of a **pea**, is the "master gland" of the endocrine system. It makes and releases hormones that **control** other glands and body functions. Pituitary gland is in your **brain**.

Your **thyroid** gland is in the neck It makes hormones that are important for growth and it helps you stay alert and full of energy. It regulates the amount of calcium absorbed by bones.

The **islets of Langerhans** are the regions of the **pancreas that contain its endocrine cells**,. **They are important in the metabolism of glucose**. They make hormones including **insuline**.

The **female** gonad, the **ovary**, is one of a pair of reproductive glands in women. They are located in the pelvis, one on each side of the uterus. Each ovary is about the size and shape of an almond. The ovaries have two functions: they produce eggs and female hormones.

**The female hormones are progesterone and estrogen**

Instead, testosterone is the main androgen secreted by the **testis**